

# PROTECTIVE COATINGS

## MARINE PAINTS

Marine environments poses the most severe exposure a substrate can be exposed at. Aside from the abundant exposure to water, oxygen, UV and saline environments, a diverse population of microorganisms also abound, which if un-checked compounds the effect of degradation on a substrate. Different coating systems with different functions of protection are therefore specified depending on the exposure of a particular area of a vessel.



### SHIP BOTTOM



#### COATING SYSTEM

<b>1st Coat</b> <b>PS 1701</b> EVI Zinc Rich Epoxy	<b>2nd Coat</b> <b>PS 2525</b> EVI High Build Epoxy Mastic	<b>3rd Coat</b> <b>PS 3107</b> EVI Antifouling SP
--	--	---

### BOOT TOP



#### COATING SYSTEM

<b>1st Coat</b> <b>PS 1701</b> EVI Zinc Rich Epoxy	<b>2nd Coat</b> <b>PS 2525</b> EVI High Build Epoxy Mastic	<b>3rd Coat</b> <b>PS 3106</b> EVI Chlorinated Rubber Topcoat
--	--	---

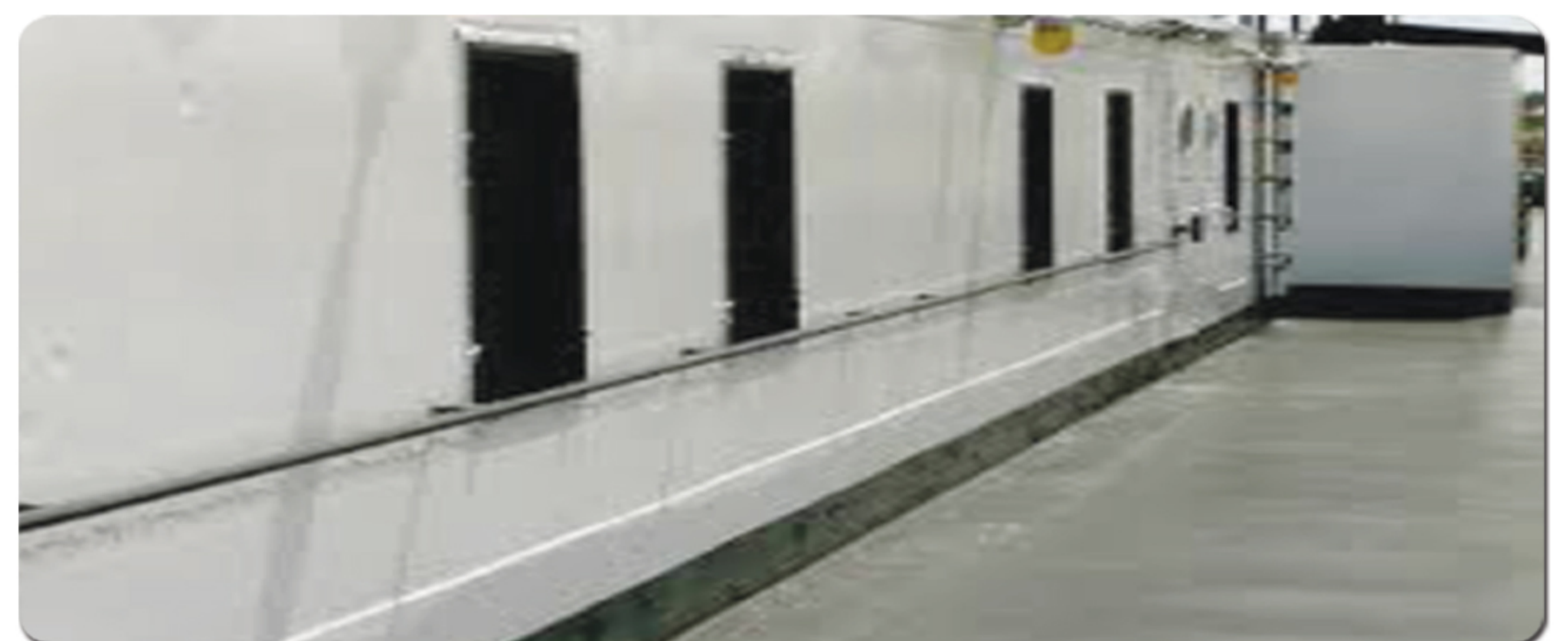
### SHIP DECK



#### COATING SYSTEM(1)

<b>1st Coat</b> <b>PS 1701</b> EVI Zinc Rich Epoxy	<b>2nd Coat</b> <b>PS 2525</b> EVI High Build Epoxy Mastic	<b>3rd Coat</b> <b>PS 2401</b> Epoxy Textile Compound	<b>Top Coat</b> <b>PS 3867</b> PU Protective Topcoat
--	--	---	--

### SHIP DECK



#### COATING SYSTEM(2)

<b>1st Coat</b> <b>PS1701</b> EVI Zinc Rich Epoxy	<b>2nd Coat</b> <b>PS 2525</b> EVI High Build Epoxy Mastic	<b>3rd Coat</b> <b>EP 250</b> EVI Solvent Free Floor Coating Broadcast Aggregate	<b>4th Coat</b> <b>EP 250</b> EVI Solvent Free Floor Coating
			<b>5th Coat</b> <b>PS 3867</b> PU Protective Topcoat

### SUPER STRUCTURE



#### COATING SYSTEM

<b>1st Coat</b> <b>PS1701</b> EVI Zinc Rich Epoxy	<b>2nd Coat</b> <b>PS 2525</b> EVI High Build Epoxy Mastic	<b>Top Coat</b> <b>PS 3867</b> EVI PU Protective Topcoat
---	--	--



## PIPELINE COATINGS

Pipelines used in the Oil & Gas industry is one of the most demanding steel substrate to protect and that it requires periodic maintenance in order to ensure lasting substrate integrity. One of the most used media to protect these materials is paint / coatings due to its economy and reasonably easier applicability especially in field maintenance activities.

### UNDERGROUND AND IMMERSIED PIPES

#### COATING SYSTEM(1)

- 1st Coat  
**PS 1701**  
EVI Zinc Rich Epoxy
- 2nd Coat  
**PS 3381**  
CoalTar Epoxy



#### COATING SYSTEM(2)

- 1st Coat  
**PS 1701**  
EVI Zinc Rich Epoxy
- 2nd Coat  
**PS 2522**  
Epoxy High Build Mio



### ABOVE GROUND / ATMOSPHERIC SERVICE

#### COATING SYSTEM(1)

- 1st Coat  
**PS 1701**  
EVI Zinc Rich Epoxy
- 2nd Coat  
**PS 2525**  
High Build Epoxy Mastic
- 3rd Coat  
**PS 3867**  
PU Protective Topcoat



#### COATING SYSTEM(2)

- 1st Coat  
**PS 2522**  
Epoxy High Build Mio
- 2nd Coat  
**PS 2525**  
High Build Epoxy Mastic
- 3rd Coat  
**PS 3867**  
PU Protective Topcoat



### ABOVE GROUND / ATMOSPHERIC SERVICE



#### COATING SYSTEM(3)

- 1st Coat  
**PS 1701**  
EVI Zinc Rich Epoxy
- 2nd Coat  
**PS 2522**  
Epoxy High Build Mio
- 3rd Coat  
**PS 3867**  
PU Protective Topcoat



## STRUCTURAL STEEL

The use of steel in modern structures has increased significantly over the last 40 years. Most of the bridges, power and communications transmission lines built during these times use steel as the predominant material of construction. Since steel is a material that is susceptible to degradation due to environmental reactions, it is imperative to ensure very good surface protection if they are to be expected to last a lifetime.

### METAL BRIDGE COATING SYSTEM

#### COATING SYSTEM(1)

- 1st Coat  
**PS 1505**  
Zinc Silicate Primer
- 2nd Coat  
**PS 2525**  
High Build Epoxy Mastic
- 3rd Coat  
**PS 3867**  
PU Protective Topcoat



#### COATING SYSTEM(2)

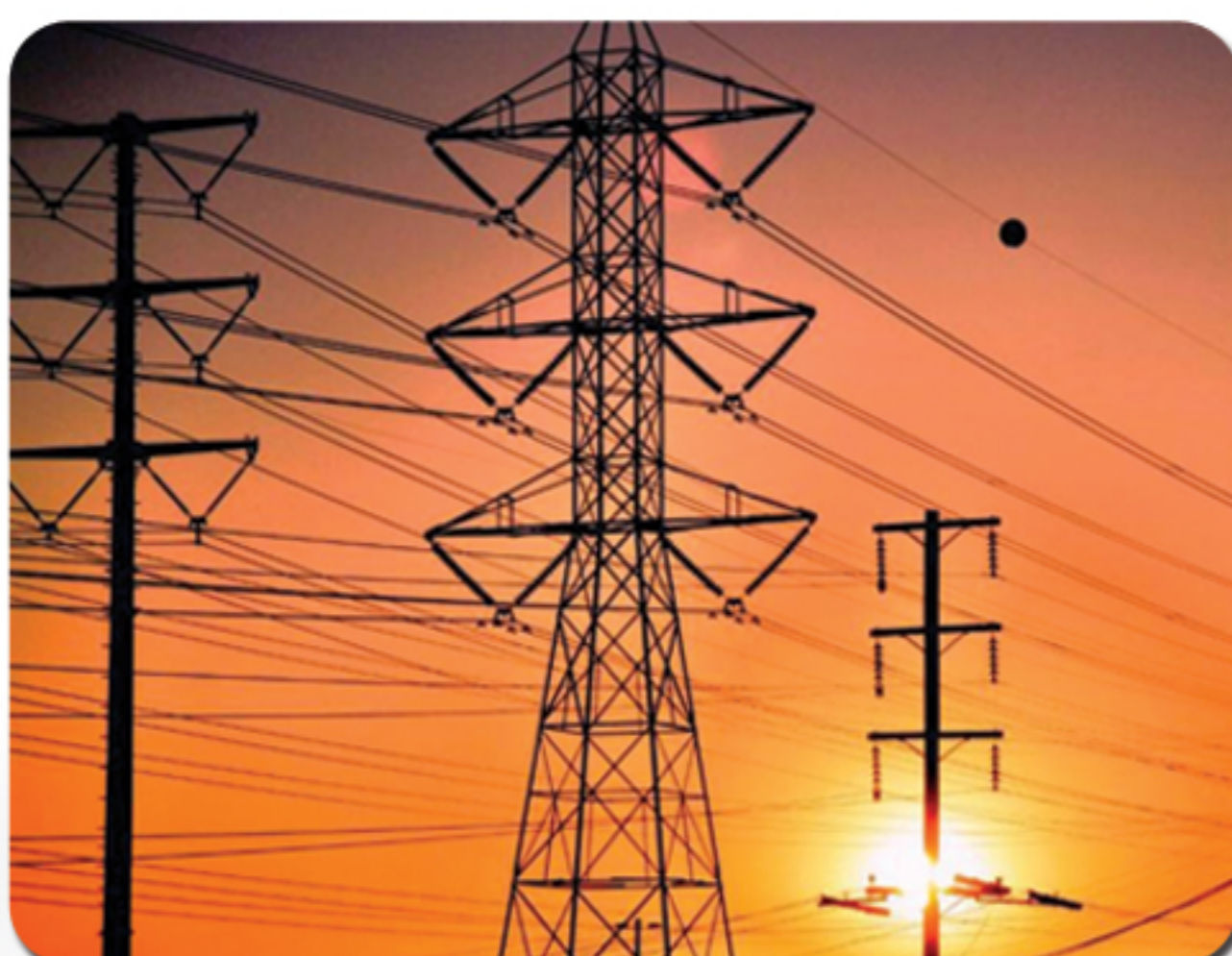
- 1st Coat  
**PS 1701**  
EVI Zinc Rich Epoxy
- 2nd Coat  
**PS 2525**  
High Build Epoxy Mastic
- 3rd Coat  
**PS 3867**  
PU Protective Topcoat



### GALVANIZED SUBSTRATE (Transmission Tower Coating System)

#### COATING SYSTEM(1)

- 1st Coat  
**PS 1600**  
Aluzinc Primer
- 2nd Coat  
**PS 3861**  
2K Acrylic Topcoat



#### COATING SYSTEM(2)

- 1st Coat  
**PS 1601**  
ETCH Primer
- 2nd Coat  
**PS 2521**  
Epoxy Intercoat
- 3rd Coat  
**PS 3861**  
2K Acrylic Topcoat



### CONCRETE BRIDGE

#### COATING SYSTEM

- 1st Coat  
**PS 2525**  
High Build Epoxy Mastic
- 2nd Coat  
**PS 2525**  
High Build Epoxy Mastic
- 3rd Coat  
**PS 3867**  
PU Protective Topcoat



[www.evivernici.com](http://www.evivernici.com)

U.A.E: P.O.Box: 18831, Dubai, UAE Email: [customercare@evivernici.com](mailto:customercare@evivernici.com)  
Tel: +971 4 251 2208, Fax: +971 4 251 0236, Toll Free Hotline in UAE: 800EVI  
UAE - KSA - OMAN - QATAR - KUWAIT - IRAQ - LEBANON - CANADA - ITALY - NIGERIA



ISO 9001-2008, ISO 14001-2004, ISO 18001-2007



Scan EVI Vernici QR CODE to get our details to your smartphones